

nuvi osm2poi

N Willink 2/12/2010

Latest Revision 1/02/2012

Introduction.....	3
TYPWiz2	3
GPX Folder.....	4
Load OSM	4
Select a POI Category	4
Add BMP file.....	4
Alerts	5
Create GPX.....	5
Show GPX.....	5
Delete GPX.....	5
Upload to Nuvi.....	5

Introduction

First, you need to download Garmin's free PoiLoader. This program will upload your custom pois to your nuvi.

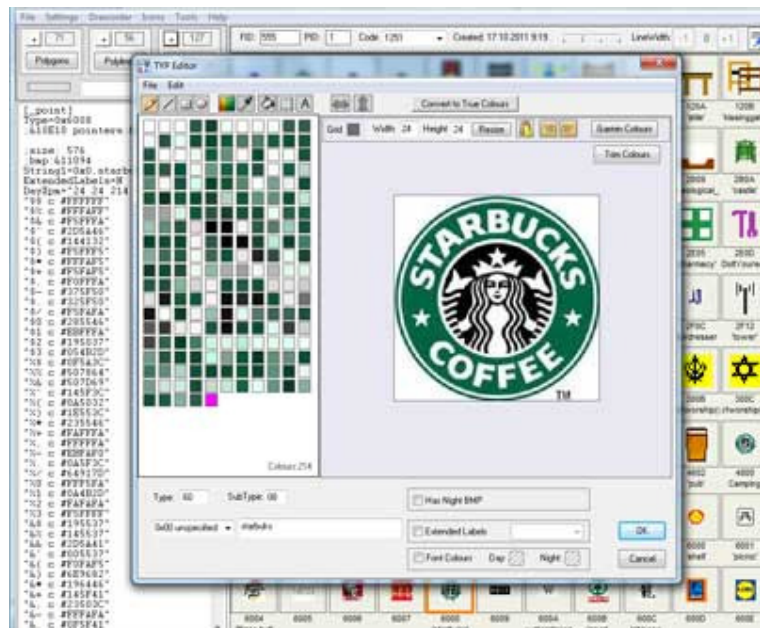
Next, you need a program that will create the individual bmp files. TYPWiz will automatically save your icons in the format specified by Garmin.

Finally you need an OSM file which can be downloaded from geofabrik or from openstreetmap.org. *Nuvi OSM2POI* will collect all the pois and sort them into categories.

TYPWiz2

Still using 3rd party TYP files? You can now *quickly customize*, create or delete polygons, polylines and pois *without having to enter one pixel at a time* or having to go on line.

- You can draw lines, ellipses, rectangles or fill shapes and create interesting patterns.
- Multiple Border & Line widths of highways can be quickly altered to suit your gps - (latest products require wider highways)
- Numerous filters to produce different background textures, wide or narrow
- Add letters, text or symbols.
- Paste bitmaps (see Starbucks)
- Quickly add or delete
- Check if types match those in Style Files, ie polygons, lines, and points. It can **highlight discrepancies**.



GPX Folder

You need to create or select a folder where all your gpxes will be stored.

Each new poi category (pub,bus stop etc) will appear as a subfolder within this main folder. It is therefore best to stick to this folder and not create a new folder for each new category.

Ie :

```
../Nuvi/restaurant
../Nuvi/fuel
../Nuvi/bus_stop
```

Load OSM

Click the load OSM button . Select an osm file and soon a list of all the different POIs contained in the file will appear.

Select a POI Category

Click on an item in the list, say pub or fuel. In yellow you should see the names and possibly coordinateness of all the pubs or fuel pumps.

Add BMP file

Some important points:

- Without a bmp file the poi will not be visible
- A bmp file needs to be stored in the same category subfolder
- A bmp's filename MUST adhere to the following format:

categorie.bmp

example:

category: *bus_stop*
bmp: *bust_stop.bmp*

You can hover over the empty bitmap to find the bmp filename.

Alerts

Some (older,it seems) nuvis are capable of generating custom made alerts.

Click alert and specify max speed and proximity.

Remember, filename has to be renamed to :

Category.avi or category.mp3

Example:

school.mp3

Create GPX

Click this button to create a new gpx.

Remember, this needs to be done for each POI category.

When loading another OSM file it may have found additional POIs.

The same button will now read: **ADD POIs**

It now appends new POIs ,if any, to the existing file.

When creating gpx any ascii characters >122 will be replace by a _


Show GPX

Click on this to show your POIs on Mapsource or any program than can read gpx files.

Delete GPX

Click on this to delete current category gpx file.

Upload to Nuvi

In Tools Settings locate poiloader.exe then click the Poiloader icon  to upload to your nuvi .

Follow the instructions. Unfortunately, it seems, you can only upload one gpx at a time.

bmp, 3, 4
gpx, 5
mp3, 5

nuvi, 1, 3, 5
pois, 3
TypWiz, 3