

How To Remove an ICON from Basecamp

October 2021

How do you remove one or more icons from a map you are using?

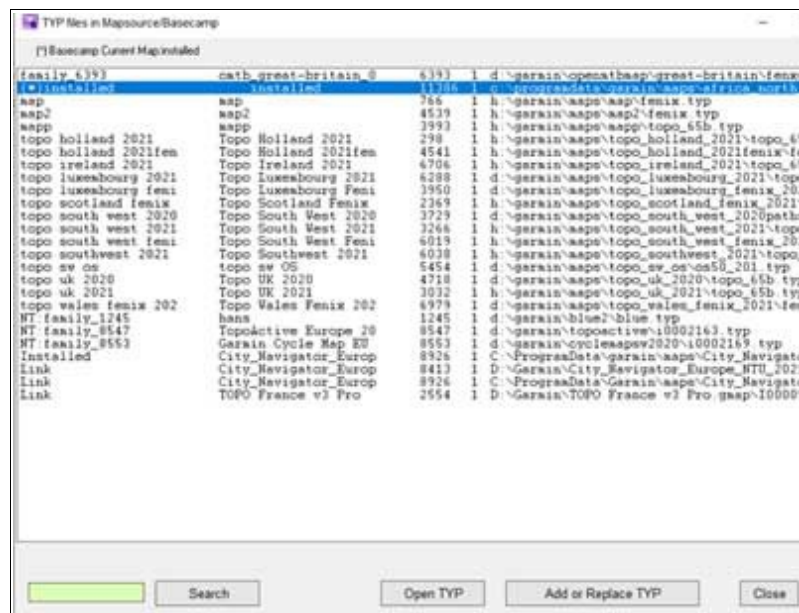
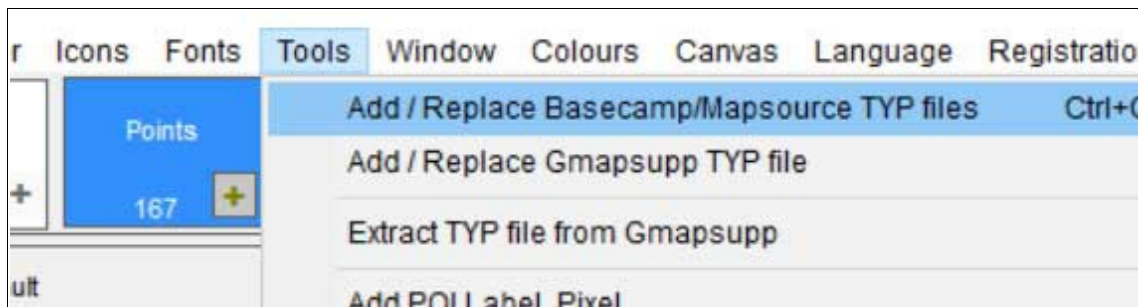
Certain icons can clutter your map and make it almost unusable!

You cannot as such remove the icon from the map but you can make it invisible!

In our example we are going to 'remove' Peaks (mountain tops) .

We know it is a point with type 0x6616 (We can use img2typ to obtain the type number) .

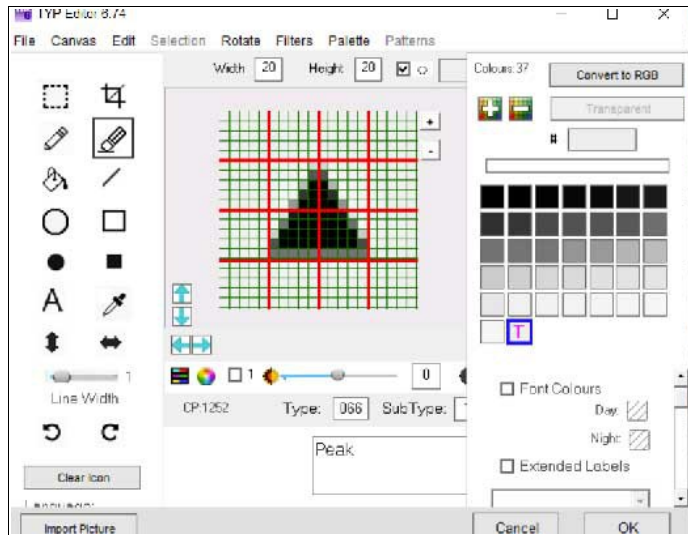
1) Open TYP FILE from Basecamp or Mapsource



Select your map (Click on the map you are interested in)

2 Click OPEN TYP

3 IN Points find 6616



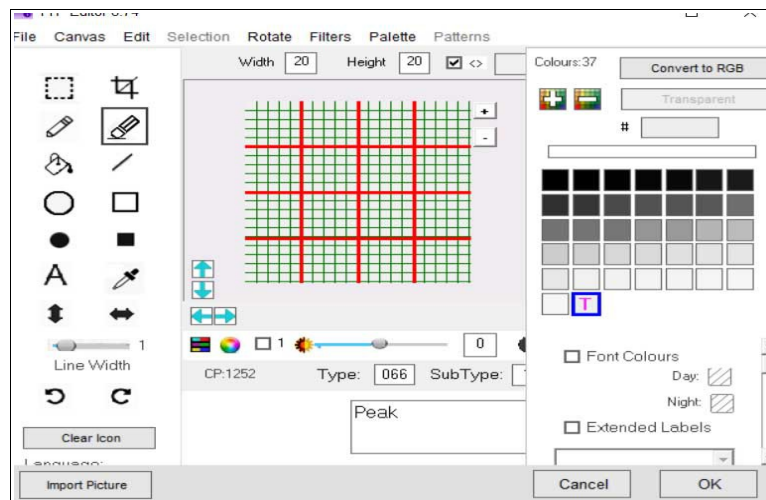
4) Click on Colour with **T** inside (Transparent)

Note : If there is no colour with a **T** inside then you can click the pink Transparent Button.

If it is disabled then untick the **Opacity** option and then click the Transparent button – see below



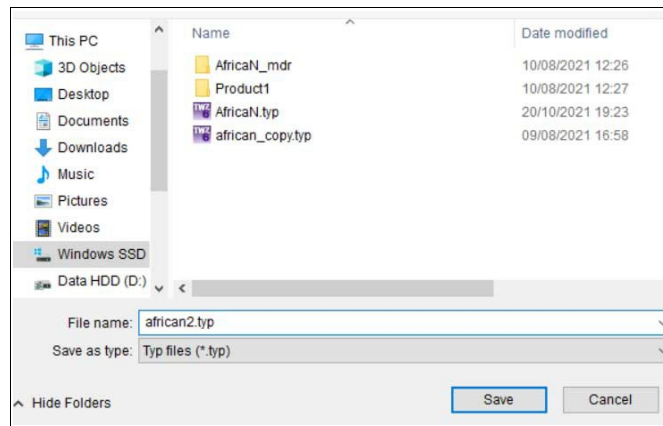
5) Click **Clear Icon** button



Now Click OK

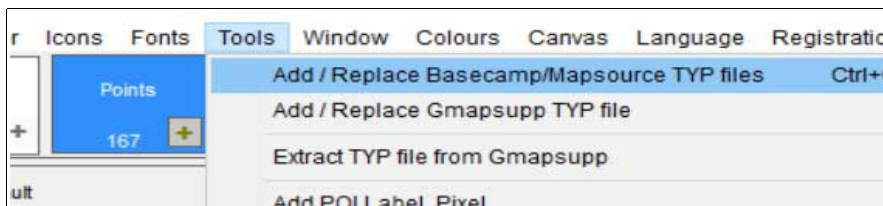
You have made the icon transparent so it doesn't appear on the map !

Now you need to save this file; it is perhaps a good idea to give it a different name but you don't have to. If you don't, then the original TYP file will be changed.



Finally you need to **replace** the Garmin TYP file with your new one.

Click Tools / Add etc



Select your map and this time click **Add / Replace TYP**

You must Close Basecamp before you do this



Reload Basecamp and your map should now no show the peaks

You may have to press CTRL G twice in Basecamp to clear the cache, although TYPWiz should normally clear the cache for you.